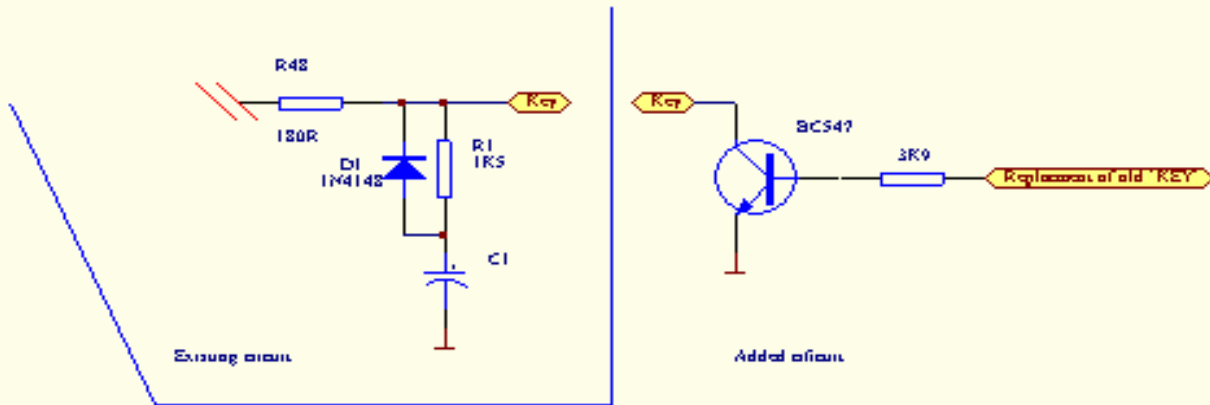
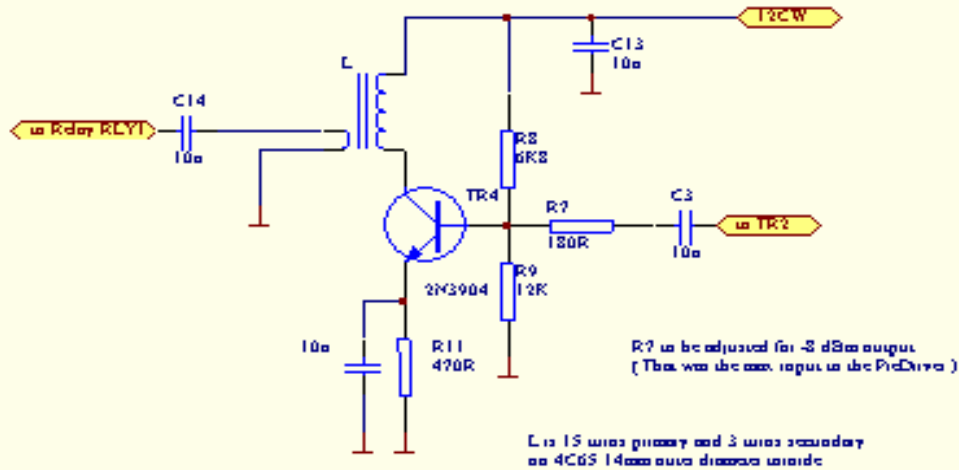


Schematic changes to the "AF/CW osc/2 tone osc" board

Changes to keying input circuit



Changes to CW osc output circuit



Remarks to the keying circuit. The original circuit had to be changed. At higher speed the space between the dots disappeared. One solution could be to remove C1 and change the value of C4 to 0.47uF. But some experimentation is required.

The optimum was to let a DSP take care of the keying to ensure correct raise and decay times at all speeds.

Remarks to the output circuit of the CW osc. I changed the original circuit to the one shown above. I still do not like emitter-followers hi hi. On the schematic above I forgot a cap. across the primary of the output Transformer (approx. 39pF). R7 is used to adjust the output power to the value that fits the input of the Predriver. In my case it is - 8 dBm.

Have fun.....OZ9FW